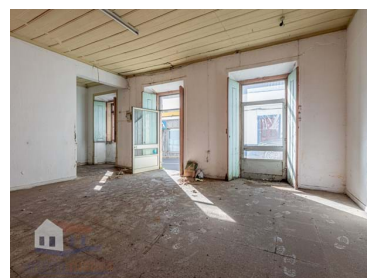




Cercal - Building



 4
Bedrooms

 2
Bathrooms

 201,32
Area (m²)

 147
Land Area (m²)

210 000 €
(EUR €)

Investment Opportunity in Cercal do Alentejo: Residential and Commercial Building for Remodeling

Privileged Location:

The building is situated in a high-traffic area, providing visibility and convenient access to services, local businesses, and public transportation.

Cercal do Alentejo is a charming village that combines the tranquility of the interior with the proximity to the main cities and beaches of the Alentejo coast.

Building Features:

Total area of 201.32 m².

Currently, the building has a floor of commercial spaces, a residential floor and an attic.



Maria Madeira

+351 963 729 802 ²

geral@arteriarustica.com

T +351 963 729 802 ² · E geral@arteriarustica.com
Rua Poeta António Aleixo 28 loja 15, 7520-171 Sines
AMI 22936

¹ (Call to national fixed network) | ² (Call to national mobile network)



Flexible layout and large spaces, ideal for adaptation and customization according to the buyer's needs.

Potential for creating modern apartments, shops, offices or a combination of residential, commercial or tourist uses.

Opportunity for Appreciation:

With the growing demand for real estate in the region and the interest in urban rehabilitation projects, this building offers an excellent opportunity for investment appreciation.

Profitability Potential:

After the remodeling, this building has the potential to generate income both through the leasing of the residential units and the leasing of the commercial or short-term rental spaces, providing a stable source of revenue for the owner.

Don't miss out on this investment opportunity in Cercal do Alentejo.

Schedule a visit to get to know this building and discover its full potential for appreciation and profitability.

Get in touch today!

Property Features

- Proximity: Shopping, Restaurants, Open field, Pharmacy, Public Transport, Schools
- Floors: 2
- Main drainage
- Quiet Location
- Energetic certification: F
- Built year: 1956
- Views: Village view
- Attic
- Central location
- Mains water



Maria Madeira

+351 963 729 802 ²

geral@arteriarustica.com

T +351 963 729 802 ² · E geral@arteriarustica.com
Rua Poeta António Aleixo 28 loja 15, 7520-171 Sines
AMI 22936

¹ (Call to national fixed network) | ² (Call to national mobile network)