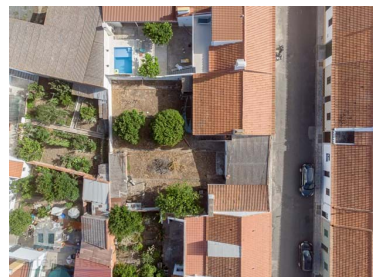




## Torrão - Villa



 **2**  
Bedrooms

 **1**  
Bathrooms

 **117**  
Area (m<sup>2</sup>)

 **378**  
Land Area (m<sup>2</sup>)

 **Garage**

**120 000 €**  
(EUR €)

### Single storey house in Vila do Torrão

Are you looking for a holiday or weekend getaway in a typical Alentejo village?  
Find this opportunity in Vila do Torrão.

It is a villa of 70 m<sup>2</sup>, with attached garage of 47 m<sup>2</sup> and a backyard of 261 m<sup>2</sup>.

The property is in need of recovery works, but currently 4 rooms are visible, one of which has a typical Alentejo chimney.

Outside there is a large backyard that allows you to recreate different areas, in order to enjoy pleasant moments of conviviality and leisure, in the company of family and friends.

Its location stands out in the property, due to its centrality, fitting into the typical Alentejo houses.

It is located next to the Vale do Gaio Dam, the ideal place to experience sports and nautical activities



**Maria Madeira**

+351 963 729 802 <sup>2</sup>  
geral@arteriarustica.com

T +351 963 729 802 <sup>2</sup> · E [geral@arteriarustica.com](mailto:geral@arteriarustica.com)  
Rua Poeta António Aleixo 28 loja 15, 7520-171 Sines  
AMI 22936

<sup>1</sup> (Call to national fixed network) | <sup>2</sup> (Call to national mobile network)



**Your Logo Here**  
*Friendly Real Estate*

ARMOR-036

Reference

Scan the QR code to view the property



or to enjoy nature in a simple way.

It is worth noting the good access, which makes it easy to travel to Comporta beach, which is 60 km from the village or to Lisbon, which is a 1h30 drive away.

Are you going to miss the opportunity to get to know it?

Contact us for more information and to schedule a visit!

## Property Features

- Garage
- Floors: 1
- Bread oven
- Quiet Location
- Energetic certification: E
- Built year: 1974
- Views: Village view
- Main drainage
- Sealed land area
- Mains water



**Maria Madeira**

+351 963 729 802 <sup>2</sup>

geral@arteriarustica.com

**T +351 963 729 802 <sup>2</sup> · E geral@arteriarustica.com**  
**Rua Poeta António Aleixo 28 loja 15, 7520-171 Sines**  
**AMI 22936**

<sup>1</sup> (Call to national fixed network) | <sup>2</sup> (Call to national mobile network)