



**Your Logo Here**  
Friendly Real Estate

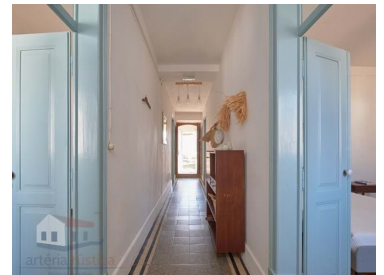
ARMOR-044

Reference

Scan the QR code to view the property



## Alvalade - Villa



**4**  
Bedrooms

**1**  
Bathrooms

**190**  
Area (m<sup>2</sup>)

**377,65**  
Land Area (m<sup>2</sup>)

**260 000 €**  
(EUR €)

## Single storey house for sale in Alvalade, Santiago do Cacém

### Property Features:

- T4 typology, with four bedrooms with good areas and perfect for a family or to accommodate visitors;
- Living/dining room;
- Practical kitchen with dining space;
- 1 Bathroom;
- 1 Storage space;

### Exterior:

The villa includes a generous outdoor space ideal for outdoor leisure time, with the possibility of gardening, creating a living space and the possibility of installing a swimming pool. It has a shed covering a generous area ideal for your outdoor meals.



**Maria Madeira**

+351 963 729 802 <sup>2</sup>

geral@arteriarustica.com

**T +351 963 729 802 <sup>2</sup> · E geral@arteriarustica.com**  
**Rua Poeta António Aleixo 28 loja 15, 7520-171 Sines**  
**AMI 22936**

<sup>1</sup> (Call to national fixed network) | <sup>2</sup> (Call to national mobile network)



**Your Logo Here**  
*Friendly Real Estate*

**ARMOR-044**

Reference

Scan the QR code to view the property



#### Extra:

- Large storage space under construction adjacent to the house that can be rebuilt as a dwelling or a multipurpose space.
- Well that can be used to supply water for irrigation or other uses.

#### Location:

Located in Alvalade, Santiago do Cacém, a region known for its tranquility and natural beauty, but with easy access to services, schools and local shops.

34 min. (39.7 km) from Porto Covo via N261 and 1 h 44 min. (147.3 km) from Lisbon via A2.

This villa is perfect for those who value the space, comfort and quiet lifestyle that only the Alentejo can offer.

This home provides a warm and versatile environment, whether for permanent residence or as a weekend getaway.

Don't miss out on this unique opportunity to acquire the home of your dreams.  
Schedule a visit now!

## Property Features

- Proximity: Restaurants, City, Open field, Pharmacy, Schools
- Floors: 1
- Storage / utility room
- Pantry
- Quiet Location
- Sealed land area
- Mains water
- Built year: 1975
- Drive way
- Views: City view
- Main drainage
- Well
- Energetic certification: F



**Maria Madeira**

+351 963 729 802 <sup>2</sup>

geral@arteriarustica.com

**T +351 963 729 802 <sup>2</sup> · E geral@arteriarustica.com**  
**Rua Poeta António Aleixo 28 loja 15, 7520-171 Sines**  
**AMI 22936**

<sup>1</sup> (Call to national fixed network) | <sup>2</sup> (Call to national mobile network)